



# The Ultimate Solution

Avery Dennison MPI 1005 Supercast Easy Apply RS™ and DOL 1460 3D High Gloss Overlamine

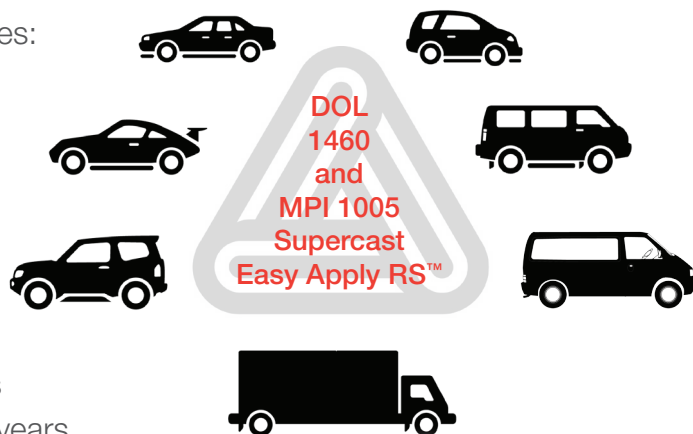
The only vehicle wrapping solution. Super Conformable. Super Fast. Super High Gloss.

Avery Dennison MPI 1005 Supercast Easy Apply RS™ now teams up with the new DOL 1460 3D High Gloss overlamine, an unrivalled vehicle wrapping solution.

Providing superior conformability for applications over the most extreme 3D curves, and into the most demanding corrugations and recesses, delivered with an automotive paint-like high gloss finish. Avery Dennison's Easy Apply RS™ adhesive technology features slideability, repositionability and air egress making application fast and easy.

Avery Dennison's industry leading solution comprises:

- High gloss 'wet-look'
- Easy Apply RS™ technology
- Repositionable & Slideable
- Unparalleled conformability
- Long Term Removability (LTR)
- Wrap pack solution for all wrap applications
- Warranted in deep recesses and corrugations
- Finished graphics solution warranted up to 5 years



Backed by the ICS Warranty Program, providing guaranteed performance, you get the ultimate in peace of mind with up to 5 years finished graphic warranty. The ultimate vehicle wrapping solution is now available.

## Avery Dennison MPI 1005 Supercast Easy Apply RS™ and DOL 1460 3D High Gloss Overlaminates

Avery Dennison's DOL 1460 3D High Gloss is a 'wet-look' overlaminate that has been designed to conform to the most extreme 3D curves, corrugations and recesses, producing stunning vehicle wraps.

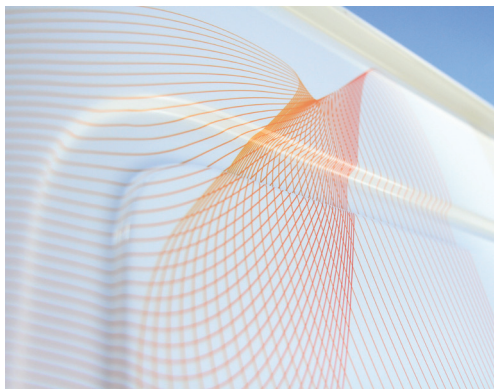
Providing superior performance from printing through to application, Avery Dennison's MPI 1005 Supercast EA RS™, features Easy Apply RS™ adhesive technology – air egress channels that help eliminate bubbles and wrinkles. Combined with added repositionability and slideability, plus Long Term Removability, MPI 1005 Supercast Easy Apply RS™ is your digital print solution for all your fleet graphics needs.

| FEATURE  | ADVANTAGE   | BENEFIT   |
|--|---|---|
| Excellent printability   | Prints well across latex, eco solvent, solvent and UV curable inkjet printers | One product for multiple platforms ensures product consistency and consolidated inventory |
| The ultimate in conformability   | Resistant to tenting and lifting when stretched                               | Stays down over complex curves and rivets keeping graphics looking great for longer       |
| Long Term Removability (LTR)   | Easy and quickly removable with heat  | Removes easily with little or no adhesive residue resulting in reduced removal times      |
| Easy Apply™ adhesive technology  | Eliminates wrinkles and bubbles   | Easy to work with and reduces application time, allowing for greater efficiency           |
| Repositionability and Slideability   | Easy to reposition and slide with minimal force                               | Lays down smoothly after pre-tacking without losing adhesion                              |
| Warranted in extreme 3D curves, corrugations and recesses                        | Provides guaranteed longer-term durability to the printed graphics            | Covered by the ICS Warranty for total peace of mind. Easier to apply and install          |
| High gloss, 'wet look' finish combined with maximum UV and weathering protection | Printed graphics remain vibrant for longer                                    | Superior appearance resulting in bright, vivid images                                     |

This feature filled wrap pack now completes all your digital print fleet requirements, eliminating the need to stock multiple digital cast films, saving you time and money.

MPI 1005 Supercast Easy Apply RS™ coupled with DOL 1460 3D High Gloss offers unparalleled performance with all the leading industry benefits captured in one ultimate solution.

| GREAT VALUE WRAP PACKS   |   | WRAP PACK OPTIONS  |
|--|---|--|
| <b>MPI 1005 Supercast Easy Apply RS™</b> <ul style="list-style-type: none"> <li>53 micron high gloss white Supercast vinyl with exceptional dimensional stability</li> <li>Grey permanent adhesive with Easy Apply RS™ and Long Term Removability (up to 5 years)</li> <li>Two sided PE coated StaFlat™ liner</li> <li>Flat, simple curves, rivets, corrugations and compound curves</li> <li>Durability, up to 7 years (unprinted)</li> </ul> | <ul style="list-style-type: none"> <li>30 micron high gloss clear super conformable UV stable cast vinyl overlaminate</li> <li>Clear permanent adhesive</li> <li>PET liner</li> <li>Deep recesses and corrugations, compound curves</li> <li>Durability, up to 5 years</li> </ul> | <b>Width (m) x Length (m)</b> <ul style="list-style-type: none"> <li>1.372m x 22.86m rolls</li> <li>1.372m x 45.7m rolls</li> <li>1.524m x 45.7m rolls</li> </ul><br><b>SAVE MORE THAN 15% OFF RRP</b> |



### APPLICATIONS

- Extreme conformable applications
- Car and van wraps
- Trains and light rail
- Flat sided trucks
- Corrugated trucks
- Outdoor advertising
- Fleet, buses, marine
- Indoor and outdoor architectural

For more information, contact Avery Dennison customer service or your sales representative on 1800 888 560 (AUS), 09 573 0995 (NZ) or visit [www.ap.averygraphics.com](http://www.ap.averygraphics.com)



Graphics and Reflective Solutions

#### Tested. Guaranteed.

Our media has undergone rigorous scientific and durability testing to guarantee that your printer and ink coupled with our media and overlaminates will work together every time. This commitment to quality is confidently backed by our ICS Warranty Program.

#### Avery Dennison

graphics.anz@ap.averydennison.com  
 Aus Freecall: 1800 888 560 Freefax: 1800 888 561  
 New Zealand Tel (09) 573 0995 Fax: (09) 573 0996  
[www.ap.averygraphics.com](http://www.ap.averygraphics.com)